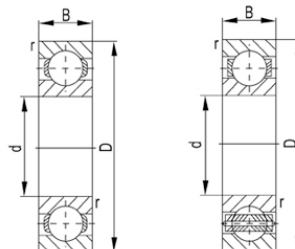
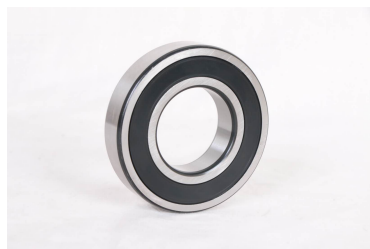


1600 系列



轴承型号	尺寸 [mm]				基本额定功率(kN)		Mass
	d	D	B	rs min	动态(Cr)	静态(Cor)	Kg
1602	6.35	17.462	6.35	0.3	1.97	0.73	0.0064
1603	7.938	22.225	7.144	0.3	3.29	1.36	0.0095
1604	9.525	22.225	7.144	0.4	3.33	1.41	0.0086
1605	7.938	23.019	7.938	0.3	3.33	1.41	0.0168
1606	9.525	23.019	7.938	0.4	3.33	1.41	0.0218
1607	11.112	23.019	7.938	0.4	2.69	1.27	0.0222
1614	9.525	28.575	9.525	0.6	3.92	2.25	0.035
1615	11.112	28.575	9.525	0.6	3.92	2.25	0.034
1616	12.7	28.575	9.525	0.6	3.92	2.25	0.03
1620	11.112	34.925	11.112	0.6	5.9	3.5	0.05
1621	12.7	34.925	11.112	0.6	5.9	3.5	0.048
1622	14.288	34.925	11.112	0.6	5.9	3.5	0.04
1623	15.875	34.925	11.112	0.6	5.9	3.5	0.048
1628	15.875	41.275	12.7	0.6	7.25	3.5	0.072
1630	19.05	41.275	12.7	0.6	7.25	4.45	0.065
1633	15.875	44.45	12.7	0.6	7.25	4.45	0.092
1635	19.05	44.45	12.7	0.6	7.25	4.45	0.085
1638	19.05	50.8	14.288	0.8	10.8	4.45	0.12
1640	22.225	50.8	14.288	0.8	10.8	6.95	0.112
1641	25.4	50.8	14.288	0.8	10.8	6.95	0.1
1652	28.575	63.5	15.875	0.8	12.8	6.95	0.21
1654	31.75	63.5	15.875	0.8	12.8	8.4	0.19

1600 系列

1657	31.8	65.1	17.5	0.8	16.5	10.6	0.215
1658	33.3	65.1	17.5	0.8	16.5	10.6	0.2